



## SL-8800<sup>PLUS</sup> HDCP PROTOCOL ANALYZER

The SL-8800<sup>PLUS</sup> is designed to support HDCP versions for multiple interfaces from DisplayPort (DP), HDMI and MHL. This HDCP protocol analyzer can be used for compliance testing and debug for Source, Sink, or Repeater devices with the latest High-bandwidth Digital Content Protection (HDCP) Specifications.

### KEY FEATURES

- Supports HDCP 2.2 Sink, and Source devices for DP
- Supports HDMI CTS HDCP 2.2 rev 1.0 Errata
- Selectable option for testing 480p60, 576p50, 720p60 and 1080p60 output via DP and HDMI
- Supports HDCP 2.2 Sink, Source, and Repeater devices for HDMI
- Supports HDCP 2.2 Sink, Source, and Dongle devices for MHL 3
- Supports HDCP 1.4 Sink, Source, and Repeater devices for HDMI
- Supports HDCP 1.4 Sink, Source, and Dongle devices for MHL 1 & 2
- Monitors the DDC activities and HDCP 2.2/HDCP 1.4 messages
- Monitors the AUX activities and HDCP 2.2 messages
- Automatically checks authentication between SL-8800<sup>PLUS</sup> and device under test
- Windows PC GUI application with USB connection
- Advanced debug mode helps developers quickly identify root cause
- View detailed log info by double-clicking failed test ID within the summary report
- Display the final output image from the stream cipher for user examination
- High performance FPGA design allows upgrades to support other specifications

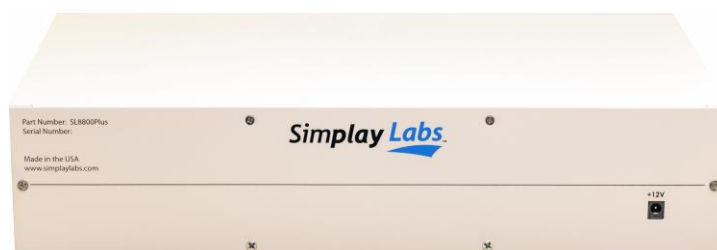
### OPTIONAL FEATURES

- SL-8800 MHL 3 Adapter (p/n SL-8800-M3X)
- SL-8800 MHL 1/2 Adapter (p/n SL-8800-M2X)
- Dongle test for MHL 1/2.x/3 (p/n SL-8800-C3 Dongle cable)

### TEST EQUIPMENT



SL-8800<sup>PLUS</sup> HDCP Protocol Analyzer Front Interface

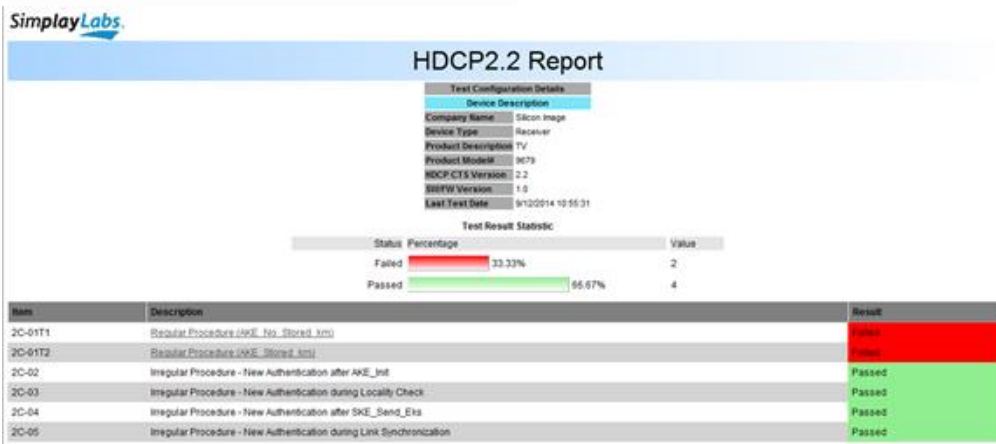


SL-8800<sup>PLUS</sup> HDCP Protocol Analyzer Back Interface

## ADVANCED DEBUG MODE

- Change numerous timing parameters within each test ID
- View DDC read and write activity between HDCP Tx/Rx
- View and print dumps of each DDC message
- View AUX read and write activity between HDCP Tx/Rx
- View and print dumps of each AUX message
- Parses every message according to HDCP 2.2/HDCP 1.4 Specification
- Records polling data changes of Rx status register
- Logs time stamp of each event to help identify system timing problems

## TEST RESULT REPORT



## FAILURE LOG INFORMATION

### Report Detail for Failed Items

```
2C-01T1 Regular Procedure (AKE_No_Stored_km)
Test Summary: 1 Failed Test: 1
Trial 1
Test Time: 9/12/2014 10:55:06
***** Configure Settings Info *****
TX_VERSION] 2.00
SW Release Version] 2.0
VERSION] 2.2
DEVICE] HDMI
Repeat Times] 1
REAUTH_REQ_OLD] 1
VPG_RN] 480p
DDC_ClkFreq] 100KHz
TX_ALLOW_NOT_Storage] 1
AKE_Init_send_time] 500
AUTH_dome_time] 500
trig_ddc_addr] 0
ddc_time_out] 500
hdcpl_dis_time_out] 1000
time_out] 10000
rand_gen] 1
verbose] 1
interim_verbose] 0
*****
Test Item(2C-01T1) Iteration(1) Begin*****
configure
msg_trig_init(source)
configure_run
init_run_core
source::hdcpl_disable
sink::hdcpl_disable
sink::hdcpl_reset_REAUTH_REQ
load_otp(0)
vpg_set(480p)
fin_reset_side_info
source<-tx::Connect
source::wait_hdmf_connected
Error: (time out) HDMF has to be connected within 10000 ms (Ref-2C-1)
msg_trig_dump(source)
*****
-- source: Start Trigger buf dump(5)
-- source: DDC Poll interval:1ms
-- OOO HDCP Encryption Disabled: (513285ms+513285ms)
```



### Customer Support Information

Email: [sales@vprime.com](mailto:sales@vprime.com)

phone: 503-619-2439

web site: [www.vprime.com](http://www.vprime.com)

Product Name: SL-8800<sup>PLUS</sup> HDCP Protocol Analyzer

Manufacturer: Simplay Labs LLC

Brand Name: Simplay Labs

Model Number: SL-8800<sup>PLUS</sup>

Size (cm): 40.6 × 24.13 × 8.89

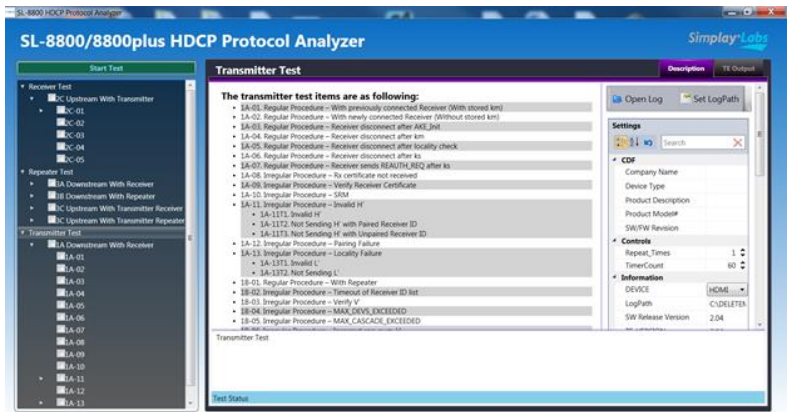
Size (in): 16.0 × 9.5 × 3.5

Weight: 3.17 kg; 7.0 lb

Power: 100 V – 240 V

Check the web site for news and updates for SL-8800<sup>PLUS</sup> HDCP Protocol Analyzer  
Simplay Labs, LLC | 3400 Garrett Drive  
Santa Clara, CA 95054

Copyright © 2017 Simplay Labs, LLC. All rights reserved.



Main Window of HDCP Analyzer