



SL-402 RELT Board

User Guide

SiI-UG-1004-B

August 2014

Contents

1. Overview.....	3
1.1. How to Use this Document.....	3
1.2. System Setup Requirements	3
1.3. SL-402 RELT Board	4
2. RELT Board – Frequency Divider.....	5
2.1. Frequency Divider.....	5
3. RELT Board – Relay	6
3.1. Relay	6
3.2. Differential eCBUS	6
3.3. Single Ended eCBUS.....	6
3.4. eCBUS Probe Points.....	7
Revision History	9

Figures

Figure 1.1. SL-402-x RELT Board Interface	4
Figure 3.1. RELT Board Silkscreen Markings	7
Figure 3.2. eCBUS Relay Paths	8

Tables

Table 2.1. Maximum Input Frequency Support	5
Table 2.2. “Divide By” Resistor Configuration	5
Table 3.1. eCBUS Paths	6
Table 3.2. eCBUS Differential eCBUS Options.....	6

1. Overview

Simplay Labs, LLC™ (SimplayLabs) has prepared this document to describe the features and operation of the SL-402-x RELT Board for Mobile High-Definition Link (MHL®) Specification 3.x compliance testing. SL-402 comes in 2 variations. The SL-402-A RELT Board is designed for Agilent probes while SL-402-T RELT Board is designed for Tektronix probes.

1.1. How to Use this Document

This document should be used in conjunction with the following documents:

- Mobile High-Definition Link (MHL®) Compliance Test Specification 3.x
- Mobile High-Definition Link (MHL®) Method of Implementation from relevant manufacturer

1.2. System Setup Requirements

Connect 12 V power supply to SL-402-x RELT Board.

1.3. SL-402 RELT Board

Figure 1.1 shows the SL-402-x RELT Board Interface.



Figure 1.1. SL-402-x RELT Board Interface

Item	Label	Description
1	12V	12 V power receptacle
2	D1	LED for state of eCBUS Relay Control [CN1]
CN1	CN1	eCBUS Relay Control
CN2	CN2	eCBUS +/- Relay
CN3	CN3	eCBUS +/- Relay
CN4	CN4	eCBUS +/- Relay
CN5	CN5	eCBUS +/- Relay
CN6	CN6	eCBUS +/- Relay
CN7	CN7	eCBUS +/- Relay
CN8	CN8	TMDS +/- Input
CN9	CN9	Reference Clock Output to Test Equipment
CN10	CN10	TMDS +/- Input

2. RELT Board – Frequency Divider

This section describes the frequency divider portion of the RELT Board.

2.1. Frequency Divider

The Frequency Divider portion of the RELT Board takes the TMDS input from the Device Under Test (DUT) and divides down the frequency to provide a reference clock to the test equipment. The frequency division is set through resistor configuration on the RELT Board. RELT Board supports divide by 1, divide by 2, divide by 4, and divide by 8 frequency divisions. The DUT TMDS +/- signals are connected to CN8 and CN10 of the RELT Board. CN9, output reference clock, is connected to the test equipment.

Table 2.1. Maximum Input Frequency Support

	Divide by 1	Divide by 2	Divide by 4	Divide by 8 [Default]
Maximum Input Frequency	1.5 GHz	3.0 GHz	3.0 GHz	3.0 GHz

Table 2.2. “Divide By” Resistor Configuration

Divide By	R9	R10
1	Open	Open
2	Open	0 Ω
4	0 Ω	Open
8	0 Ω	0 Ω

Note: See [Figure 3.1](#) for locations of R9 and R10.

3. RELT Board – Relay

This section describes the relay portion of the RELT Board.

3.1. Relay

The Relay portion of the RELT Board takes eCBUS signals and routes them between DUT and test equipment. One eCBUS path, PATH 1 as shown in [Figure 3.2](#), allows the testing of the DUT. The second eCBUS path, PATH 2 as shown in [Figure 3.2](#), allows for configuration of the DUT through the eCBUS SINK/SOURCE Boards. The Relay paths are control through Relay Switch CN1.

Table 3.1. eCBUS Paths

Relay Switch State [CN1]	Signal Path	
0 [PATH 1]	CN2 ↔ CN3	CN4 ↔ CN5
1 [PATH 2]	CN2 ↔ CN7	CN4 ↔ CN6

Note: See [Figure 3.2](#).

3.2. Differential eCBUS

CN2/CN4, CN3/CN5, and CN6/CN7 are connected to the eCBUS differential +/-pairs. The +/- pairs are interchangeable with the options shown in [Table 3.2](#).

Table 3.2. eCBUS Differential eCBUS Options

Pair	Option 1		Option 2	
	eCBUS+	eCBUS–	eCBUS+	eCBUS–
1	CN2	CN4	CN4	CN2
2	CN3	CN5	CN5	CN3
3	CN7	CN6	CN6	CN7

3.3. Single Ended eCBUS

Either CN2/CN3/CN7 or CN4/CN5/CN6 path can be used for single ended eCBUS testing. One path allows the test equipment to configure the DUT into the necessary test mode. The second path allows the test equipment to run the test.

Signal	Description
+3.3V	Test point for 3.3V supply
5V	Test point for 5.0V supply
J9	Test point for 12.0V supply
GND	Test point for GND
J4/GND	Test point for GND
J8/GND	Test point for GND
J1.1	CN6 GND
J1.2	CN6 SIGNAL
J1.3	CN7 SIGNAL
J1.4	CN7 GND
J2.1	CN5 GND
J2.2	CN5 SIGNAL
J2.3	CN3 SIGNAL
J2.4	CN3 GND
JP1	For test purposes only



© 2014 Simplay Labs, LLC. All rights reserved.
CONFIDENTIAL

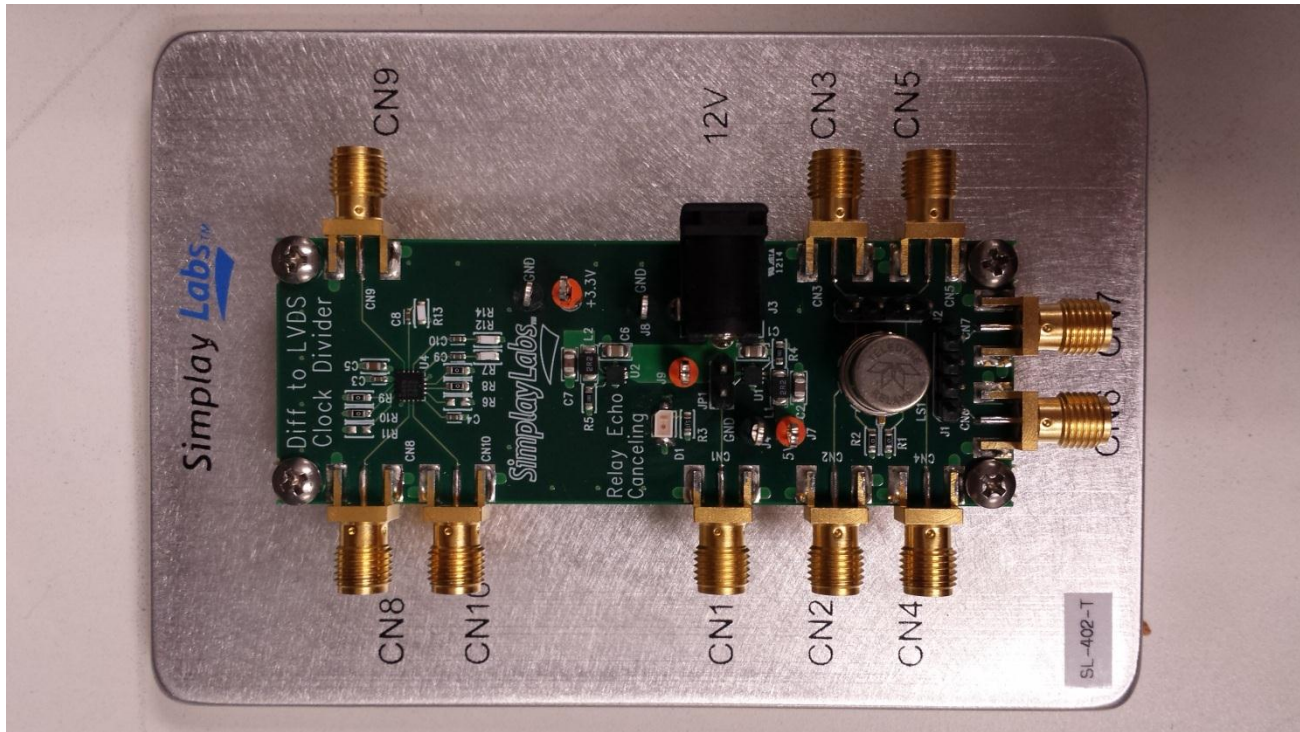


Figure 3.2. eCBUS Relay Paths

Revision History

Revision B, August 2014

Moved legal information to the back.

Revision A, June 2014

First production release.

General Warranty Terms

Simplay Labs, LLC., (Simplay Labs), offers a limited warranty for its Simplay Labs products. Any product first sold to your business is guaranteed to be free from defects in both components and workmanship under regular uses. The warranty period commences on the date the item ships.

Attention: Your invoice with the date of purchase, model number and serial number of the product is your proof of the date of purchase.

This International Limited Warranty is applicable and shall be honored in every country where Simplay Labs or its Authorized Service Providers offer warranty service subject to the terms and conditions provided in this International Limited Warranty Statement.

Simplay Labs Products Warranty Period

The warranty terms for Simplay Labs products are: Domestic & Asia	EU & UK
1 Year	2 Year

The International Limited warranty does not affect your statutory rights.

System Warranty

During the warranty period, the defective hardware of Simplay Labs products will be either repaired or replaced, with new or like new products, at the discretion of Simplay Labs except in the cases listed in the Limitation of Liability Clause of this document.

This International Limited Warranty covers the costs of service parts and labor required to restore your product to fully functional condition. Simplay Labs will, at its discretion, repair or replace any defective products or parts thereof covered by this International Limited warranty with refurbished parts of the product that are equivalent to new or like new products in both functionality and performance. A product or part that is repaired or replaced under this International Limited warranty shall be covered for the remainder of the original warranty period applying to the product or part, or for 90-days, whichever expires last. All exchanged parts and products under this International Limited Warranty will become the property of Simplay Labs.

Software Limited Warranty

Simplay Labs offers no warranty, either explicitly expressed or implicitly implied, for any pre-installed software, its quality, performance, functionality, or compatibility for a particular purpose. Nor does Simplay Labs warrant that the functions contained in the software will meet specific requirements or that the operation of the software will be uninterrupted or error-free. Thus, the software is sold 'as is' unless otherwise explicitly stated in writing.

Obtaining the Warranty Service

Warranty service or Returned Merchandise Authorization (RMA) under this International Limited Warranty will be honored only if claims are made within the warranty period. For notifications to Simplay Labs or products outside the warranty period, the process will be the same, but charges may apply. Contact details may be obtained on Simplay Labs website (www.simplaylabs.com/service). Customers are requested to perform the following actions before claiming Simplay Labs product as defective:

Owner must notify Simplay Labs, during the warranty period, in writing of alleged defect, and allow Simplay Labs a reasonable opportunity to inspect the allegedly defective product;

No Product may be returned without Simplay Labs' consent, The Simplay Labs RMA# must accompany all returns, and all returns must be delivered to Simplay Labs within the warranty period;

Owner may, then at its own expense, return the allegedly defective Product, freight pre-paid and in the original packaging, accompanied by a brief statement explaining the alleged defect to Simplay Labs;

If Simplay Labs determines that any returned Product is not defective, or if Simplay Labs determines that the defect is not covered by the warranty, Simplay Labs will return the Product to the Owner at Owner's expense, freight collect, and Owner agrees to pay Simplay Labs' reasonable cost of handling and testing;

Upon determining that a returned product is defective, to receive warranty service Owner will need to present the invoice showing the original purchase transaction. If shipping the product, Owner will need to package it carefully and send it, transportation prepaid by a traceable, insured method, to the Simplay Labs Service Center. Package the product using adequate padding material to prevent damage in transit. The original container is ideal for this purpose. Include the RMA#, your name, return shipping address, email address and telephone number where you may be reached during business hours, inside the shipping package with the unit. Any replacement unit will be warranted under these Terms and Conditions for the remainder of the original warranty period or ninety (90) days whichever is longer.

Make sure to back up any important data and remove all confidential, proprietary information. Neither Simplay Labs nor its authorized service centers are responsible for damages to or loss of any programs, data, or other software and files in the items.

Refer to user manual enclosed within the product package and/or information on <http://www.simplaylabs.com/service> for important tips on how to operate and troubleshoot the product

International Warranty

Warranty may be valid when a Simplay Labs product is purchased in one country and transferred to another country, without voiding the warranty. Please be advised that service availability and response time may vary from country to country.

Simplay Labs is not responsible for any export and import control issues, handling fees, tariffs, import duties, and all other related fees where owner is responsible for shipping its products.

Disclaimer of Warranty

THIS WARRANTY IS EXPRESSED IN LIEU OF ALL OTHER WARRANTIES, EXPRESSED OR IMPLIED, INCLUDING THE IMPLIED WARRANTY OF MERCHANTABILITY, THE IMPLIED WARRANTY OF FITNESS FOR A PARTICULAR PURPOSE AND OF ALL OTHER OBLIGATIONS OR LIABILITIES ON SIMPLAY LAB'S PART, AND IT NEITHER ASSUMES NOR AUTHORIZES ANY OTHER PARTY TO ASSUME FOR SIMPLAY LABS ANY OTHER LIABILITIES. THE FOREGOING CONSTITUTES THE BUYER'S SOLE AND EXCLUSIVE REMEDY FOR THE FURNISHING OF DEFECTIVE OR NONCONFORMING PRODUCTS AND SIMPLAY LABS WILL NOT IN ANY EVENT BE LIABLE FOR COST OF SUBSTITUTE OR REPLACEMENT, COST OF FACILITIES OR SERVICE, DOWNTIME COSTS, LOSS OF PROFITS, REVENUES OR GOODWILL, RELIANCE DAMAGES, LOSS OF DATA, LOSS OF USE IF OR DAMAGE TO ANY ASSOCIATED EQUIPMENT, OR ANY OTHER INDIRECT, INCIDENTAL, SPECIAL, OR CONSEQUENTIAL DAMAGES BY REASON OF THE FACT THAT SUCH PRODUCTS WILL HAVE BEEN DETERMINED TO BE DEFECTIVE OR NONCONFORMING.

THE RIGHTS AND OBLIGATIONS OF THE PARTIES UNDER THIS AGREEMENT SHALL NOT BE GOVERNED BY THE PROVISIONS OF THE 1980 U.S. CONVENTION ON CONTRACTS FOR THE INTERNATIONAL SALE OF GOODS OR THE UNITED NATIONS CONVENTION ON THE LIMITATION PERIOD IN THE INTERNATIONAL SALE OF GOODS, AS AMENDED (COLLECTIVELY, THE "CONVENTIONS"); RATHER, THE RIGHTS AND OBLIGATIONS OF THE PARTIES SHALL BE GOVERNED BY THE LAWS OF THE STATE OF CALIFORNIA, INCLUDING ITS PROVISIONS OF THE UNIFORM COMMERCIAL CODE. FOR THE AVOIDANCE OF DOUBT, THE CONVENTIONS ARE HEREBY EXCLUDED.

This Limited Warranty gives you specific legal rights. You may also have other rights that may vary from state to state or from country to country. You are advised to consult applicable state or country laws for full determination of your rights.

Simplay Labs products are not designed for any "critical applications." "Critical applications" shall mean life support systems, medical applications, connections to implanted medical devices, commercial transportation, nuclear facilities or systems or any other applications where product failure could lead to injury to persons or loss of life or property damage.

Copyright Notice

Copyright © 2014 Simplay Labs, LLC. All rights reserved.

Trademark Acknowledgment

Simplay®, Simplay HD®, Simplay HD logo, Simplay Labs™ and Simplay Labs logo are trademarks or registered trademarks of Silicon Image, Inc. in the United States and/or other countries. HDMI® and the HDMI logo are trademarks or registered trademarks of, and are used under license from, HDMI Licensing, LLC. in the United States or other countries. MHL® and the MHL logo are trademarks or registered trademarks of, and are used under license from, MHL, LLC. in the United States or other countries. All other trademarks and registered trademarks are the property of their respective owners in the United States and/or other countries.

HDMI Licensing, LLC; MHL, LLC, and Simplay Labs, LLC are wholly owned subsidiaries of Silicon Image, Inc.

The absence of a trademark symbol does not constitute a waiver of the trademarks owner's rights or other intellectual property rights with regard to a product name, logo or slogan.

Export Controlled Document

This document contains materials subject to the Export Administration Regulations. Transfer of this information by any means to a foreign destination may require a license. These materials shall not, in the absence of authorization under U.S. and local law and regulations, as required, be used by or exported or re-exported to (i) any U.S. sanctioned or embargoed country, or to nationals or residents of such countries; or (ii) any person, entity, organization or other party identified on the U.S. Department of Commerce's Denied Persons or Entity List, the U.S. Department of Treasury's Specially Designated Nationals or Blocked Persons List, or the Department of State's Debarred Parties List, as published and revised from time to time; (iii) any party engaged in nuclear, chemical/biological weapons or missile proliferation activities; or (iv) any party for use in the design, development, or production of rocket systems or unmanned air vehicles.

Limitation of Liability

Simplay Labs reserves the rights to refuse warranty service of products under disputable conditions. Simplay Labs also holds the rights to declare final decision whether products are within warranty conditions. The following actions and damages will result in voiding the limited warranty:

Damage caused by act of nature, such as fire, flood, wind, earthquake, lightning, etc.

Damage or incompatibility caused by failure to perform a proper installation or to provide an appropriate operational environment for the product, including but not limited to unstable wired/ wireless network connection and phone lines, bad grounding, external electro-magnetic fields, direct sunlight, high humidity and vibration.

- Damage caused by impact with other objects, dropping, falls, spilled liquids, or submersion in liquids.
- Damage caused by unauthorized repair or disassembling of the product.
- Damage caused by any other abuse, misuse, mishandling, or misapplication.
- Damage caused by third party peripherals (including but not limited to visible damages on motherboard or other electronic parts of the product such as burn spots after electric discharge, melting, fusing, splitting, etc.).
- Any unauthorized software or modification of built-in software not approved by Simplay Labs.
- The serial number of the product (or serial number stickers of its parts) has been modified, removed, blurred or damaged.
- Cracks and scratches on LCD and plastic material as well as other defects caused by transportation, handling or customer abuse.



1140 E. Arques Avenue
Sunnyvale, CA 94085
T 408-616-4000 F 408-616-6398
www.simplaylabs.com